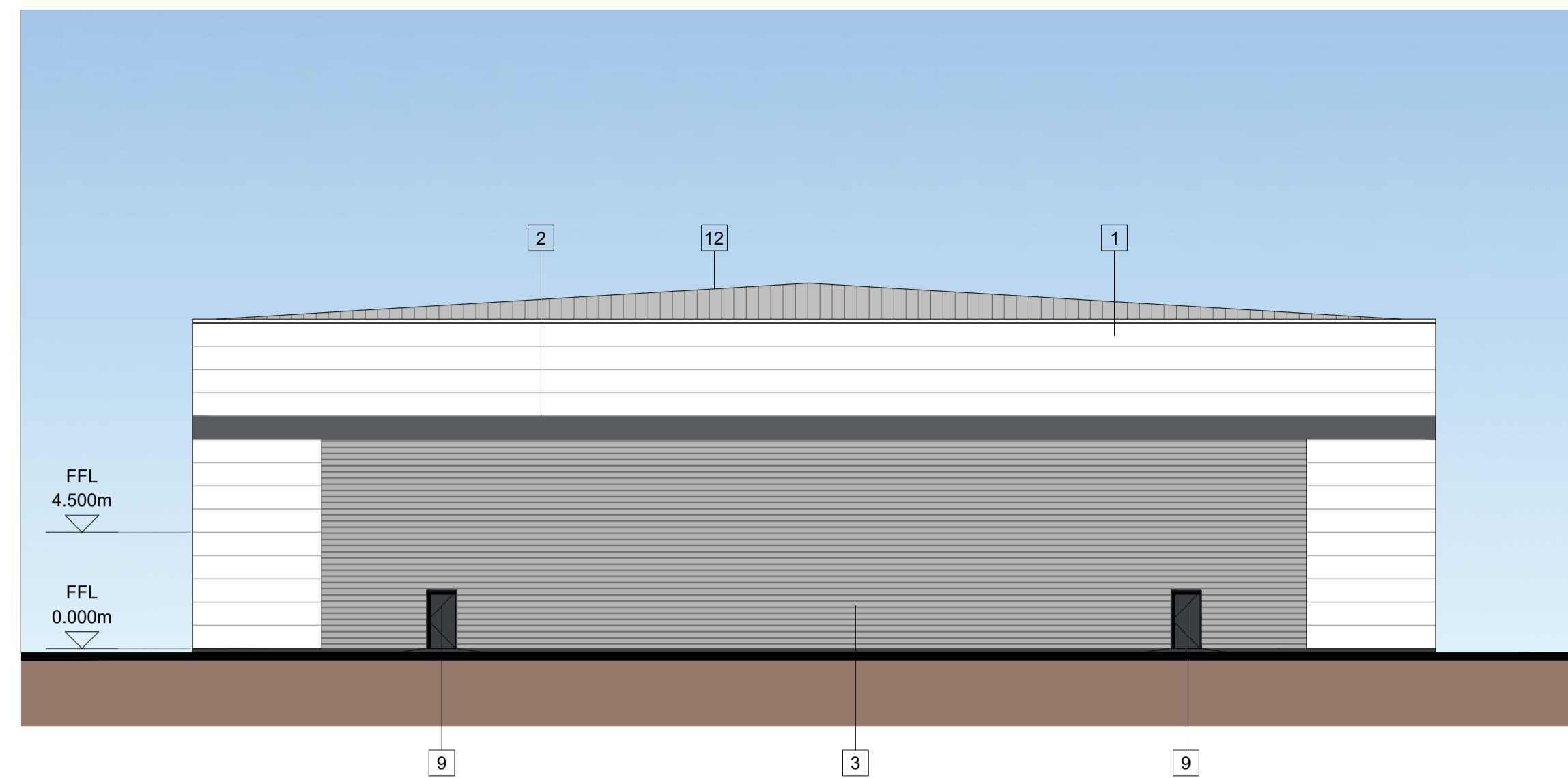
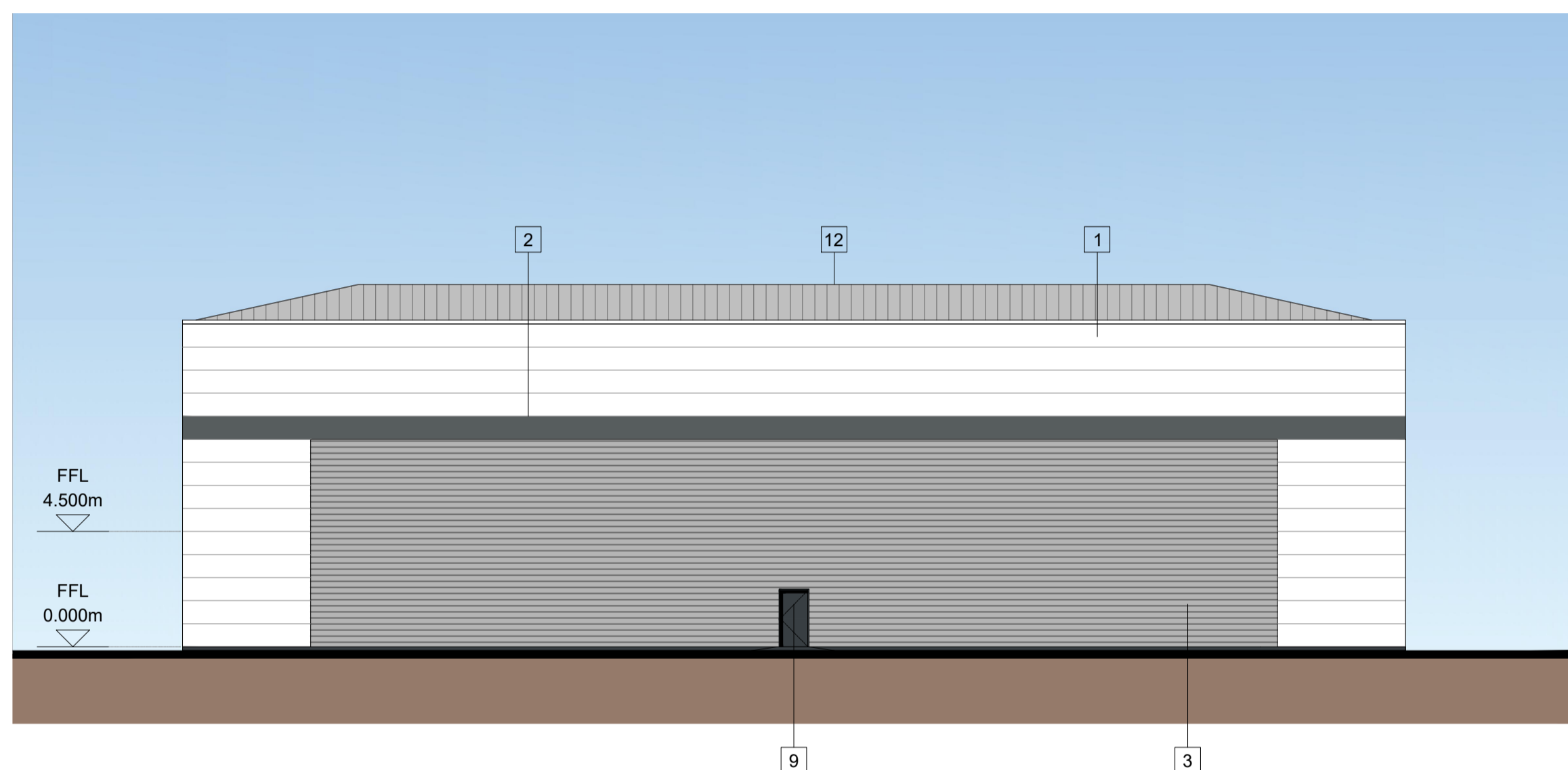


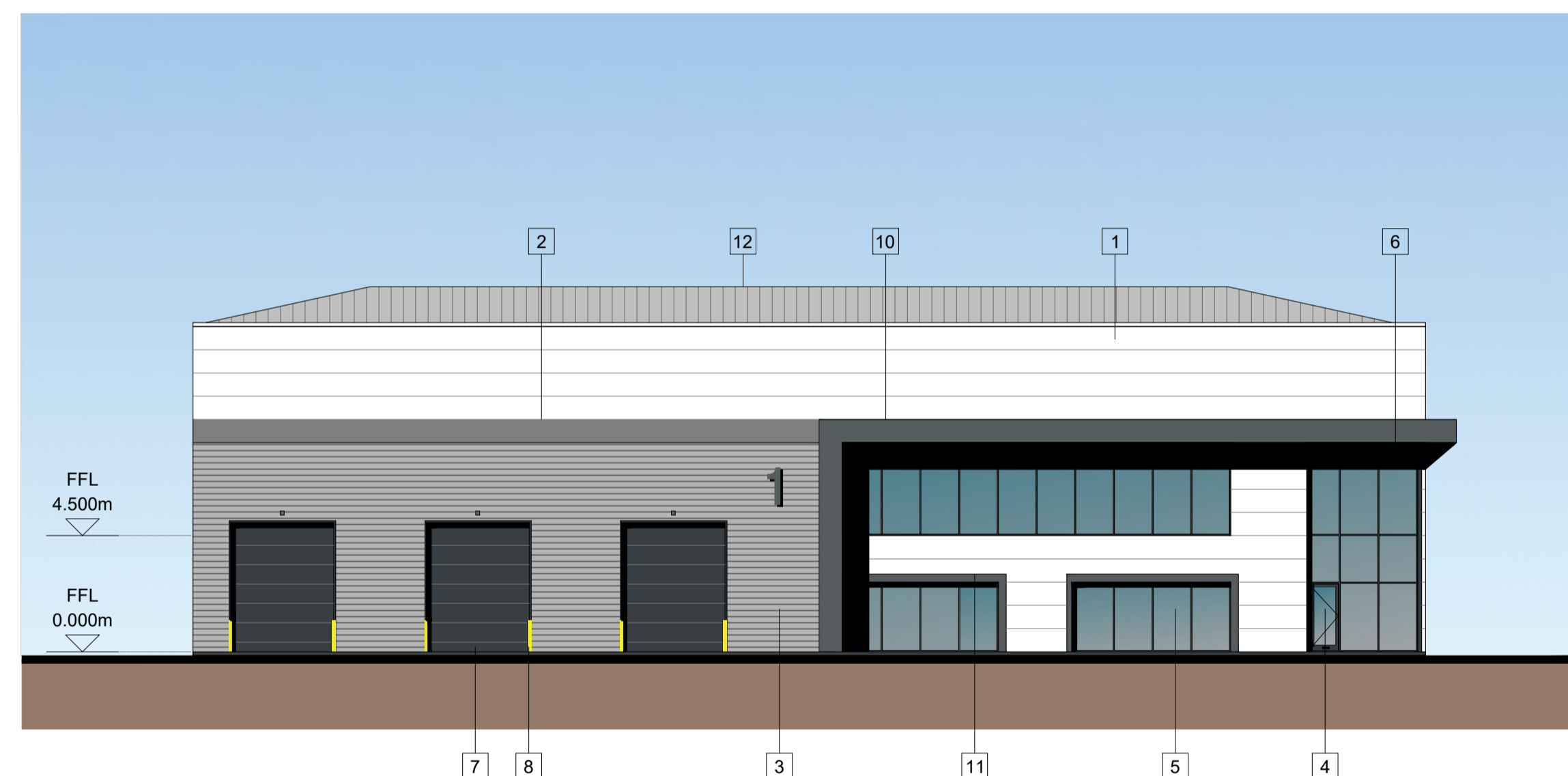
NORTHERN ELEVATION



SOUTHERN ELEVATION



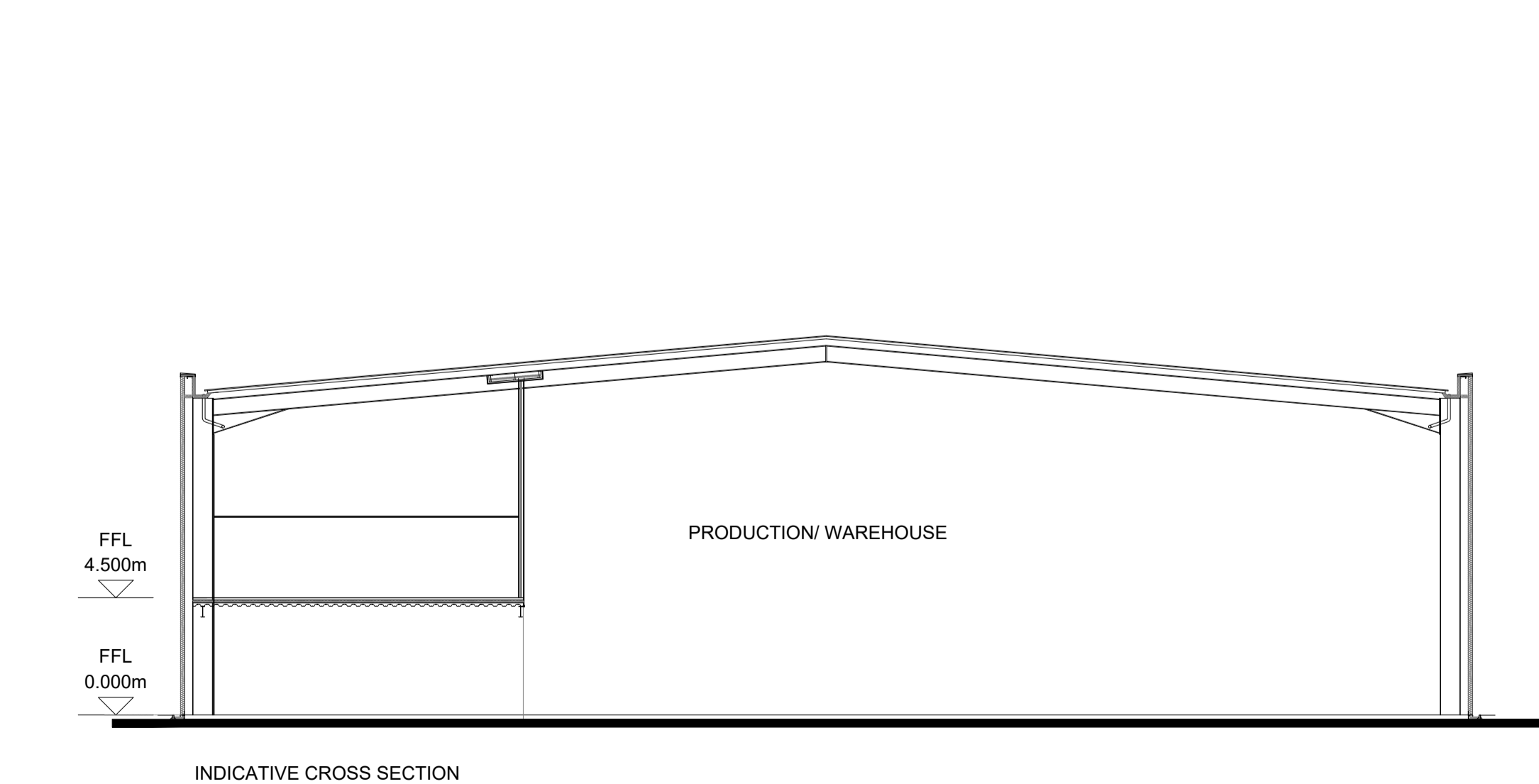
WESTERN ELEVATION



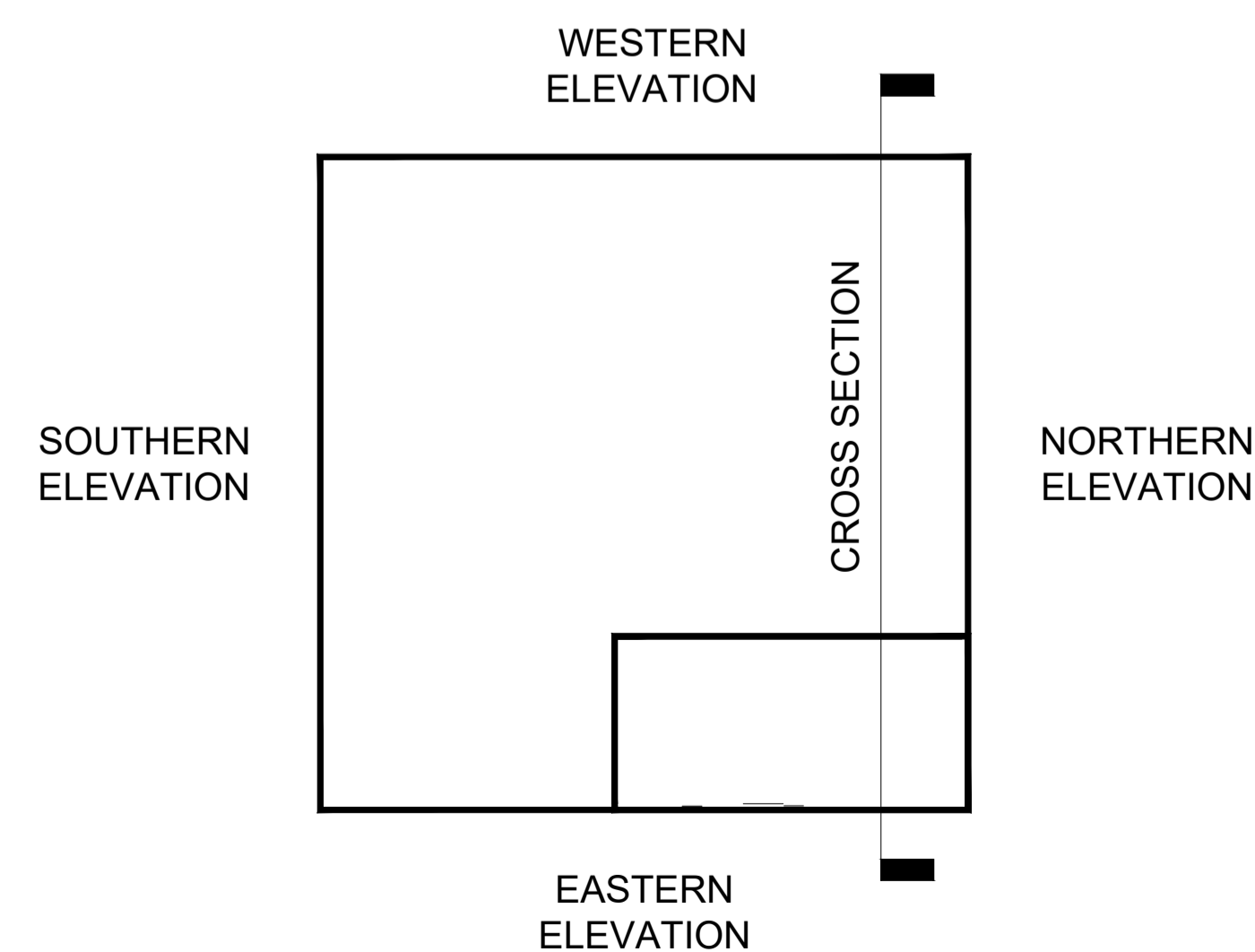
EASTERN ELEVATION

MATERIALS KEY:

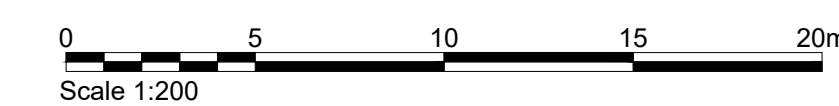
- 1 HORIZONTAL MICRO RIB CLADDING (WHITE)
- 2 HORIZONTAL MICRORIB CLADDIN (BASALT GREY RAL 7012)
- 3 HORIZONTAL PROFILED CLADDING (MID GREY)
- 4 ALUMINIUM FRAMED ENTRANCE DOORS POWDER COATED ANTHRACITE GREY RAL 7016
- 5 ALUMINIUM FRAMED WINDOWS POWDER COATED ANTHRACITE GREY RAL 7016
- 6 ALUMINIUM LOUVRED VENT POWDER COATED ANTHRACITE GREY RAL 7016
- 7 LOADING DOORS (INSULATED) ANTHRACITE GREY RAL 7016
- 8 STEEL BOLLARD (YELLOW)
- 9 STEEL PERSONNEL DOORS ANTHRACITE GREY RAL 7016
- 10 FEATURE CANOPY BASAL GREY RAL 7012
- 11 WINDOW FLASHING BASAL GREY RAL 7012
- 12 PROFILED ROOF CLADDING



INDICATIVE CROSS SECTION



REFERENCE FLOOR PLAN NTS



**DRAFT**

Client:  
PINEBRIDGE



Project:  
GUILDFORD  
MIDDLETON INDUSTRIAL ESTATE

12 Warren Yard,  
Warren Park,  
Milton Keynes,  
MK12 5NW  
01908 305 246

info@prc-group.com  
www.prc-group.com

Drawing Title:  
PROPOSED ELEVATIONS  
UNIT 1

Scale @ A1: 1:200  
Checked by: JR  
Date: APR 23

Job No: 11596  
Stage: PL 012  
Drawing No: \*  
Rev: \*

Issue Status:  
Construction  Preliminary   
Information  Approval   
Tender

**Architecture**  
Planning  
Master Planning  
Urban Design  
Interiors  
Landscape

**Offices**  
Woking  
London  
Milton Keynes  
Warsaw